



Rudolf-Diesel-Str. 21-23  
D- 33178 Borchen

Telefon: +49 (0) 5251 / 691 69 0  
Telefax: +49 (0) 5251 / 691 69 11

E-Mail: info@waptech.de  
Internet: www.waptech.de

Installation and maintenance instructions for the tow bar, type: WLZD-TKL  
EC type approval e4 No. 94/20 2854 00\*

## 1 mounting

The cross beams are bolted on top of the drawbar tube (see page 2).  
Based on the V value specified in Tables (Sheet 4-8)  
FL max values not to be exceeded and L1 min not to be exceeded.

With the cross-members, the drawbar to the chassis frame is selectively bolted or welded.

For the screw must be used:

- 16 piece 6-Point Bolt M16 in required length, DIN 931 or DIN 933  
Strength class 8.8 or 10.9
- 16 piece 6-point nut M16 DIN 980-8 or 10
- Sandwich plate (ZP) to Zg No: 4703965
- The tightening torque is 210 +10 / 0 Nm at grade 8.8
- The tightening torque is 290 +10 / 0 Nm at grade 10.9.

Optional:

- 16 piece flange bolts M16x1, 5 in the required length, DIN 6921 - 10.9
- 16 piece flange nut M16x1, 5 DIN 6927-10
- Sandwich plate for Zg No: 4703965
- The tightening torque is 250 +10 / 0 Nm.

To accommodate the shear forces must after screwing the drawbar thrust plates (SB) be welded to the chassis frame. Position, see figure below. material Thrust sheets: flat iron, at least long 40x10x100, St 52-3. Welding on both sides of the sheets, only in the longitudinal direction.

The screw connection of the drawbar with no cross member is directly connected to the chassis frame. These elements are the same compound as used in union with crossmember.

The welding of the crossmember to the chassis is the same as shown on Sheet three

## 2 maintenance

check tightness of all fittings between drawbar crossmember and chassis frame ideally once per month, but at least every 20,000 km.

Torques, see item 1 Assembly.

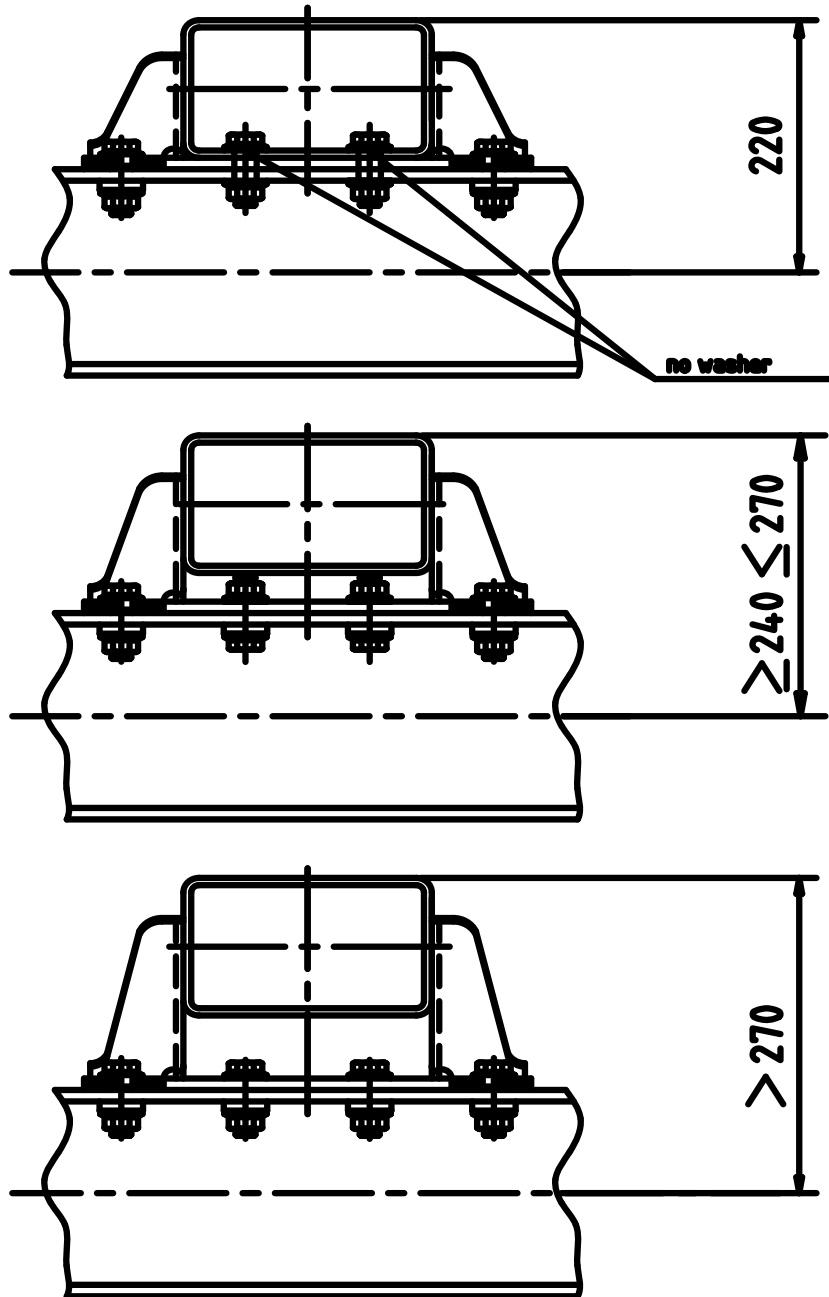
Tightening Screw Towing Towing see installation instructions, MA 010th

Setting Operating and maintenance instructions for the length adjustment see installation instructions MA-043 and MA-044 is added.

Deviations from these instructions only with the approval of the manufacturer.

Subject to change!

| Nummer | Datum      |
|--------|------------|
| MA-060 | 20-06-2008 |

**Installation and maintenance instructions for the tow bar, type: WLZD-TKL  
EC type approval e4 No.94/20 2654 00\*****Fasteners per crossbeam (shown = Flange)****8 Flange M16x1, 5x50 - DIN 6921 - 10.9****8 Stück Flanschmutter M 16x1,5 - DIN 6927 - 10****8 (4) Piece U-disk, drawing no: 4801638****Torque 250 +10 / 0 Nm****optional****8 piece 6-Point Bolt M16x50, DIN 933, opt. DIN 931 - 8.8****8 6-point nut M 16, to DIN 980-8****8 (4) Piece U-disk, drawing no 4801638****Torque 210 +10 / 0 Nm**

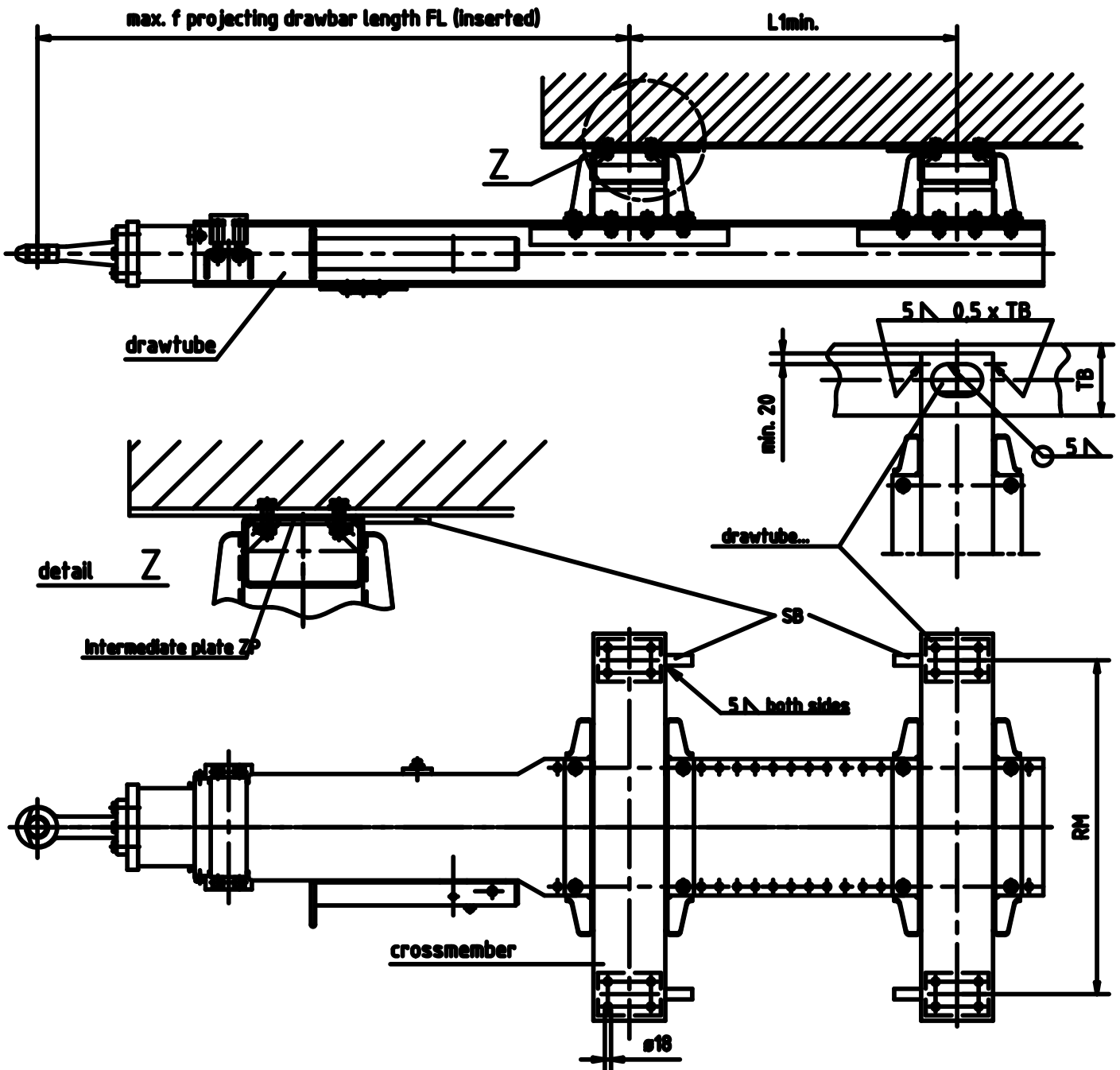
| Nummer | Datum      |
|--------|------------|
| MA-060 | 20-06-2008 |

Rudolf-Diesel-Str. 21-23  
D- 33178 Borcheln

Telefon: +49 (0) 5251 / 691 69 0  
Telefax: +49 (0) 5251 / 691 69 11

E-Mail: info@waptech.de  
Internet: www.waptech.de

Installation and maintenance instructions for the tow bar, type: WLZD-TKL  
EC type approval e4 No. 94/20 2854 00\*



Manual arc welding DIN 1913  
Red electrode E 4343 RR (R) 7  
MAG arc welding DIN 6559  
SG 3 - M 21 - Y 4 2 2 0

Pern. Variations on dimensions  
without tolerances  
DIN 7168 gross

Pern. Variations for Dimensions with no indication  
Tolerances in welded  
constructions DIN 6570

Deviations from these instructions only with the approval of the manufacturer.

| Nummer | Datum      |
|--------|------------|
| MA-060 | 20-06-2008 |